



**SCREEN WIPER SOLUTIONS**

## 20NM SPECIFICATIONS

Unit Type	Voltage	Arc of Wipe	Liner Length
20NM	24	OVA	057

### Standard Details

2 Speed • Self Parking • Insulated  
Earth Return • 12v and 24v

### Angles of Arc

Variable - at stated angles

### Pantograph Units

40°, 50°, 60°, 70°, 80°, 90°

### Pendulum Units

40°, 50°, 60°, 70°, 80°, 90°

### Spindle Centres

Between Drive Liner and Idler =  
50mm

### Drive Liner: M20

Brass Liner / 12mm SS Spindle

### Liner Overall Length

Bulkhead Thickness + 65mm

### Idler Liner

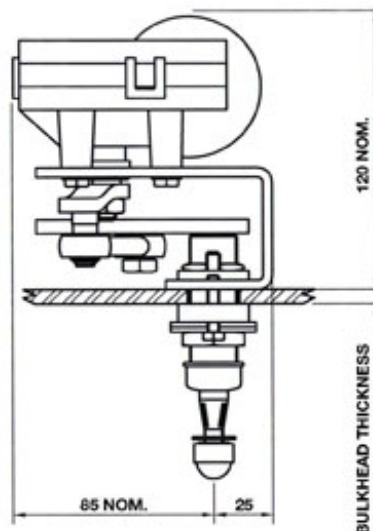
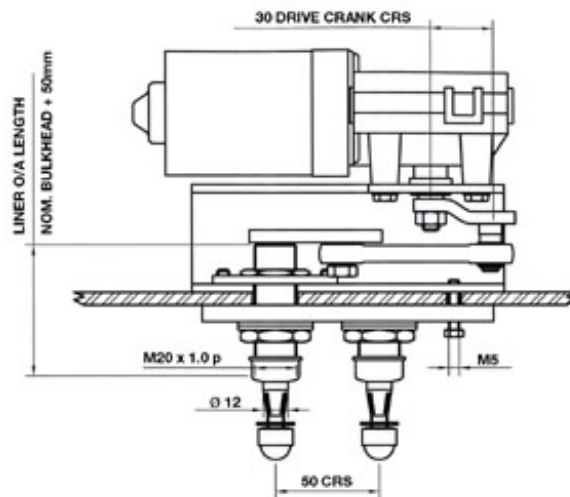
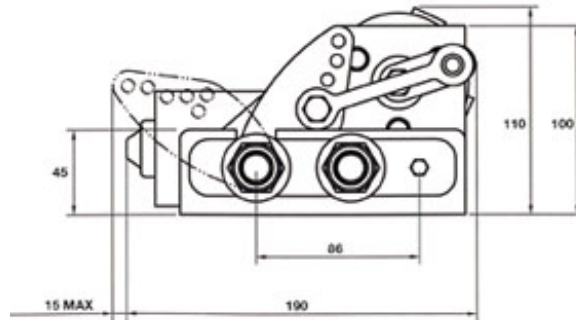
M20 - Brass Liner / 20mm SS  
Spindle

### Bracket

No notation used for Bracket

### Unit Weight

Allowing for the maximum arm and  
blade lengths: 8.0Kgs (17.5 lbs)



## WIPER ARMS AND BLADES

## Pantograph Arms

### P613

Medium Duty.

Lengths:

12" - 24" (310mm to 610mm)  
max

**Drive Head:** 12mm

**Idler Head:** 10mm

Blade Clip: 14mm

## Pendulum Arms

### F6

Medium Duty.

Lengths:

12" to 28" (310mm to 710mm)  
max

**Drive Head:** 12mm

Blade Clip: 14mm

## Blades

### B140

Curved Blade .

Lengths:

12" to 24" (310mm to  
610mm) max.

For use with Arm Types:

Pendulum F63

Pantograph P613

## ELECTRICAL DETAILS

20NM Motor Unit		
VOLTAGE	STARTING CURRENT	RUNNING CURRENT
12v DC	5 amps	3 amp
24v DC	3 amps	2 amp

Wiring the Motor Unit to a Rotary Switch	
Motor	Switch
31b (self park reversal feed)	position P
53 (low speed)	position L
53a (self park) and positive DC ship's supply	position B
53b (high speed)	position H
31 (earth connection)	the negative ship's supply
Washer Pump	position W

Wiring the Motor Unit to a Toggle Switch	
Motor	Switch
31b (self park reversal feed)	position 8
53 (low speed)	position 4
53a (self park) and positive DC ship's supply	position 6
53b (high speed)	position 2
31 (earth connection)	the negative ship's supply

Wiring the Motor Unit to a Multi Speed Control Switch	
Motor	Switch
31b (self park reversal feed)	to the BLUE wire
53 (low speed)	to the YELLOW wire
53a (self park) and positive DC ship's supply	both RED wires
53b (high speed)	to the WHITE wire
31 (earth connection) and the negative ship's supply	to the BLACK wire
Washer Pump	to the BROWN wire

